

Land Management Roundtable: Balancing Visitor Use with Resource Protection



February 6, 2010

Things to consider

(both for the present & future)

- Determine what you want to protect. (i.e. conservation values - rare species, vistas, agricultural)





Things to consider (both for the present & future)

- Determine threats to what you want to protect. (both natural and man-made – fire, invasives, plant diseases, overgrazing, soil compaction by off-road vehicles, erosion, litter, chemical usage)

Things to consider

(both for the present & future)

- Identify if public access is appropriate and how you want to facilitate it.
(signage, trails, parking, maps, types of uses – walking, kayaking, hunting, fishing, etc.)



Photo by Marian Howell



Things to consider

(both for the present & future)

- Determine what you want to protect.
- Determine threats to what you want to protect.
- Identify if public access is appropriate and how you want to facilitate it.

Benefits of Public Access

- Increases visibility of land trust
- Users of the land are the best stewards
- Gain more volunteers
- Increase membership levels
- If part of mission, helps validate the purpose of land trust is being upheld
- Provides educational opportunities
- Improves quality of a community
- Reconnects people with the natural resources they depend upon

Examples of Public Access Maps

1. Town Bell's Neck Conservation Lands

Acres: 259 **Total Trail Length:** 2.75 miles

Conservation History and Importance:

In 1668, settler John Bell is believed to have acquired much of this land from the Saquatucket Native Americans. The land passed through multiple owners until nearly 300 years later, the town purchased it to protect the Herring River, West Reservoir, and buffering woodlands. Additional acreage was added over the years. The land surrounds the West Reservoir (fresh water) and East Reservoir (brackish). Trails offer views of wind ruffled water and sweeping salt marsh. Watch for ospreys and the secretive black-crowned night heron in spring and summer. Each April, herring swim upstream along a herring ladder at the west trailhead. Canoeists and kayakers can launch near each trailhead.



West Trailhead Parking:

From Rt. 28 in Dennisport, take Depot St. north for 1.1 miles. Turn right on to a dirt road for 0.2 mile. From Great Western Road, take Depot Street south 0.6 mile. Turn left on to a dirt road for 0.2 mile.



East Trailhead Parking:

From Great Western Road, take Bell's Neck Road (dirt) south. Drive 0.25 mile and on the left will be a small trailhead kiosk and parking area.

NOTE:

In order to protect the sensitive river herring migration, the west trailhead parking is closed to vehicle access from April 10 to June 15. State law prohibits the taking of herring.



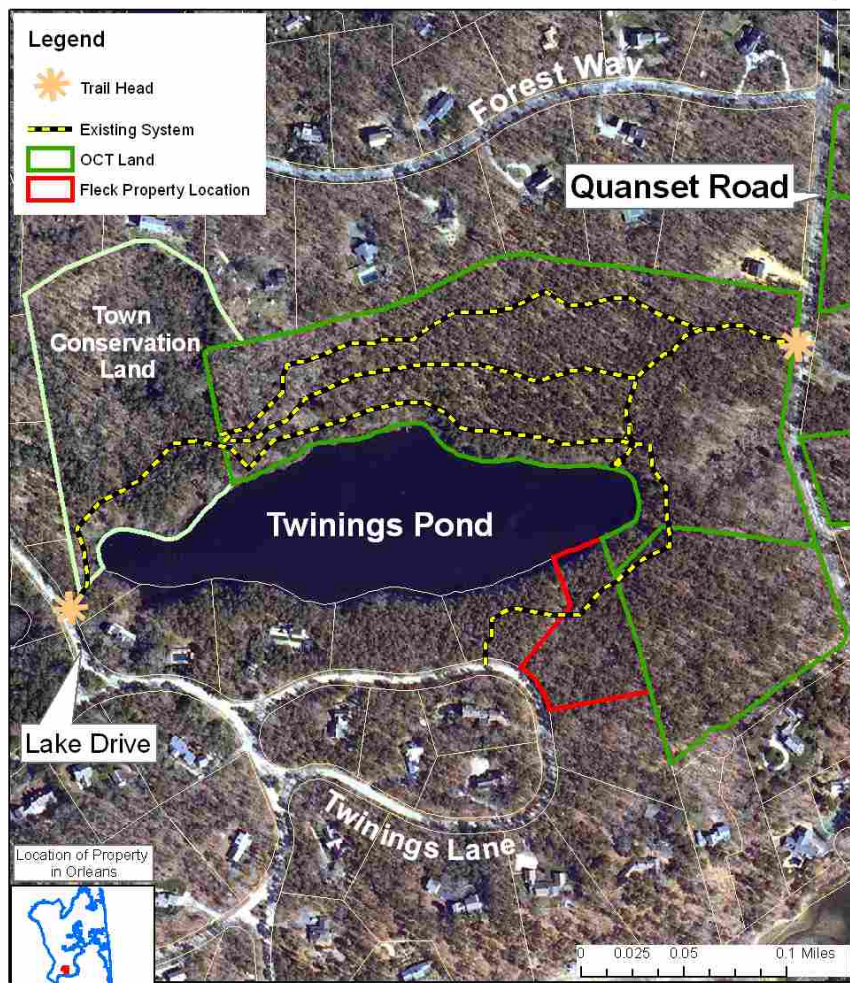
Copyright HCT 2016

Beebe Woods and Peterson Farm



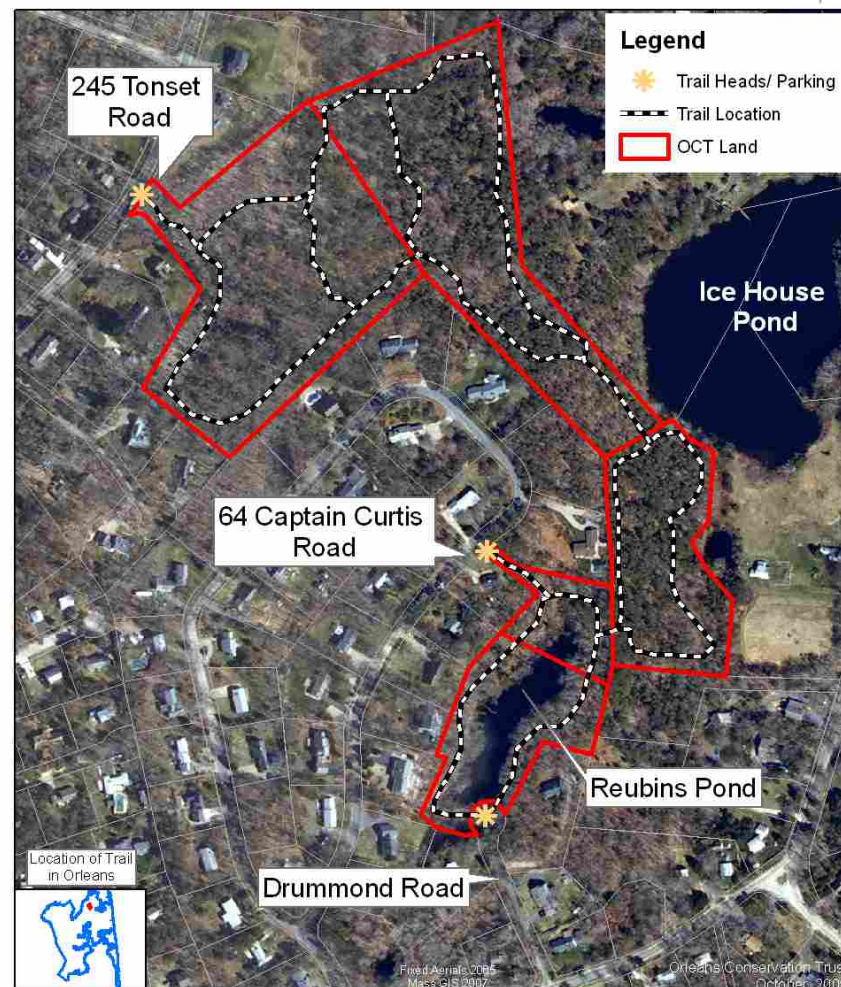
Map made by Beth Schwartzman, 2004, for The 300 Committee Land Trust. For more information or to become a member visit www.300committee.org, visit the office at 157 Locust Street, Falmouth, MA 02540, or call 508-540-0876

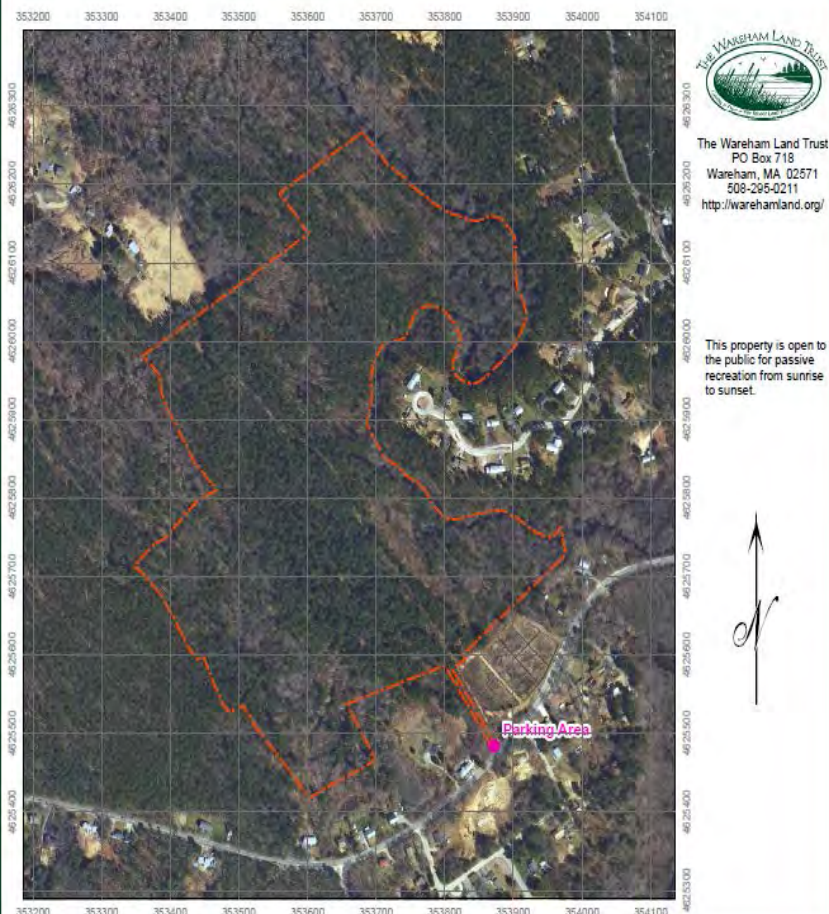
Twinings Pond Trail System



Map Prepared by The Orleans Conservation Trust, Inc. November 2009. Data provided by MassGIS, parcel layer provided by Cape Cod Commission

Ice House Pond/ Reubins Pond Trail



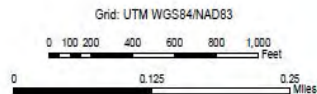


Fearing Hill Conservation Area Owned by the Town of Wareham

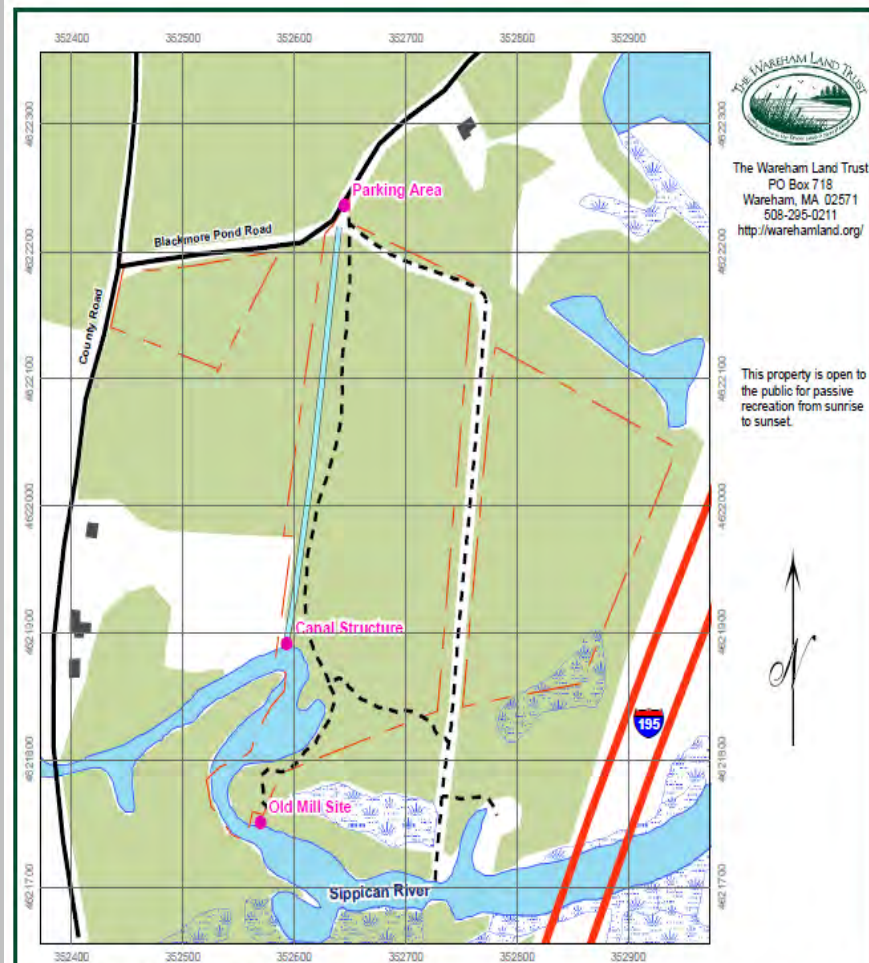
Please observe the following:

- No motorized vehicles
- No fires
- Pets under secure control; please clean up and remove waste
- No littering-what is brought in must be brought out
- Do not disturb or remove flora or fauna
- Be respectful of neighbors

Town Conservation Property



July 2008

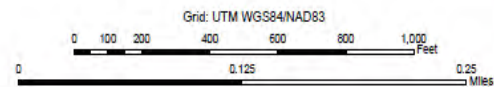


Tweedy and Barnes Conservation Area

Please observe the following:

- No motorized vehicles
- No fires
- Pets under secure control; please clean up and remove waste
- No littering-what is brought in must be brought out
- Do not disturb or remove flora or fauna
- Be respectful of neighbors

- Highway
- Main Road
- Trails
- Dry Canal
- Open Water
- Wetland
- Forest
- Buildings
- Property Boundary



13 December 2007

OCT: working with you to
preserve land, neighborhood
and town character

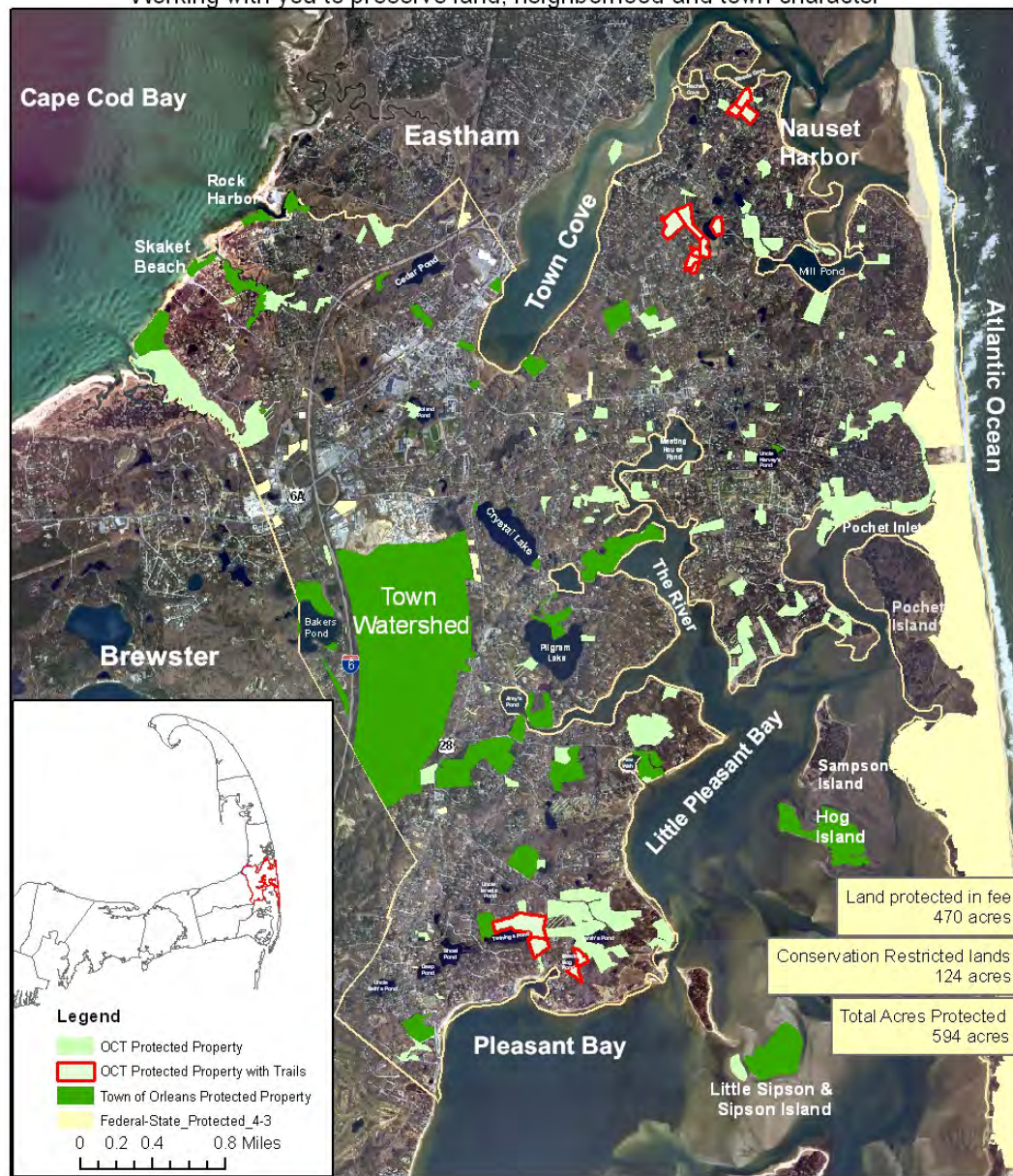


Orleans Conservation Trust (OCT)

Aerial Map of Protected Lands

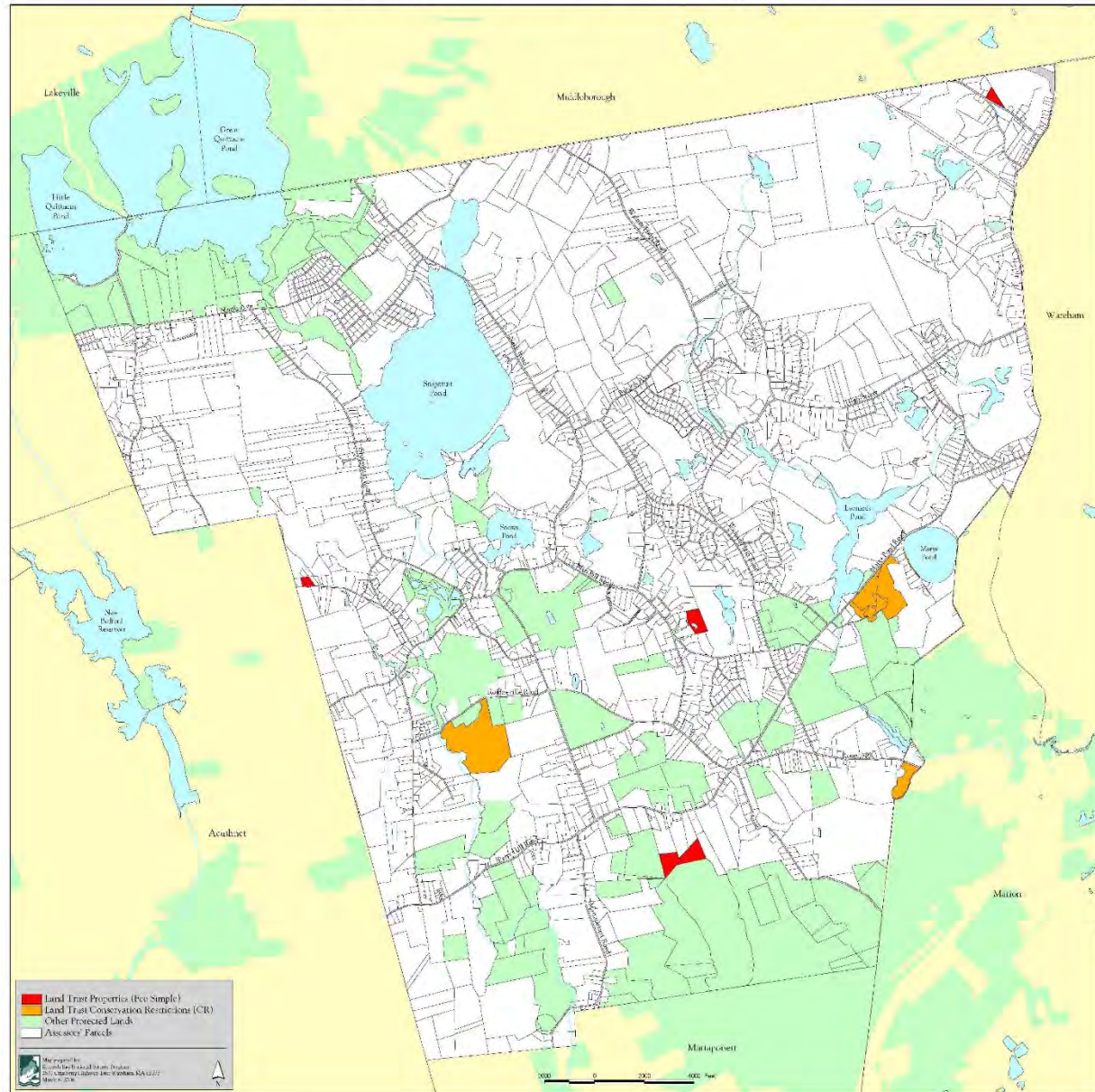
www.OrleansConservationTrust.org

Working with you to preserve land, neighborhood and town character





Rochester Land Trust Properties



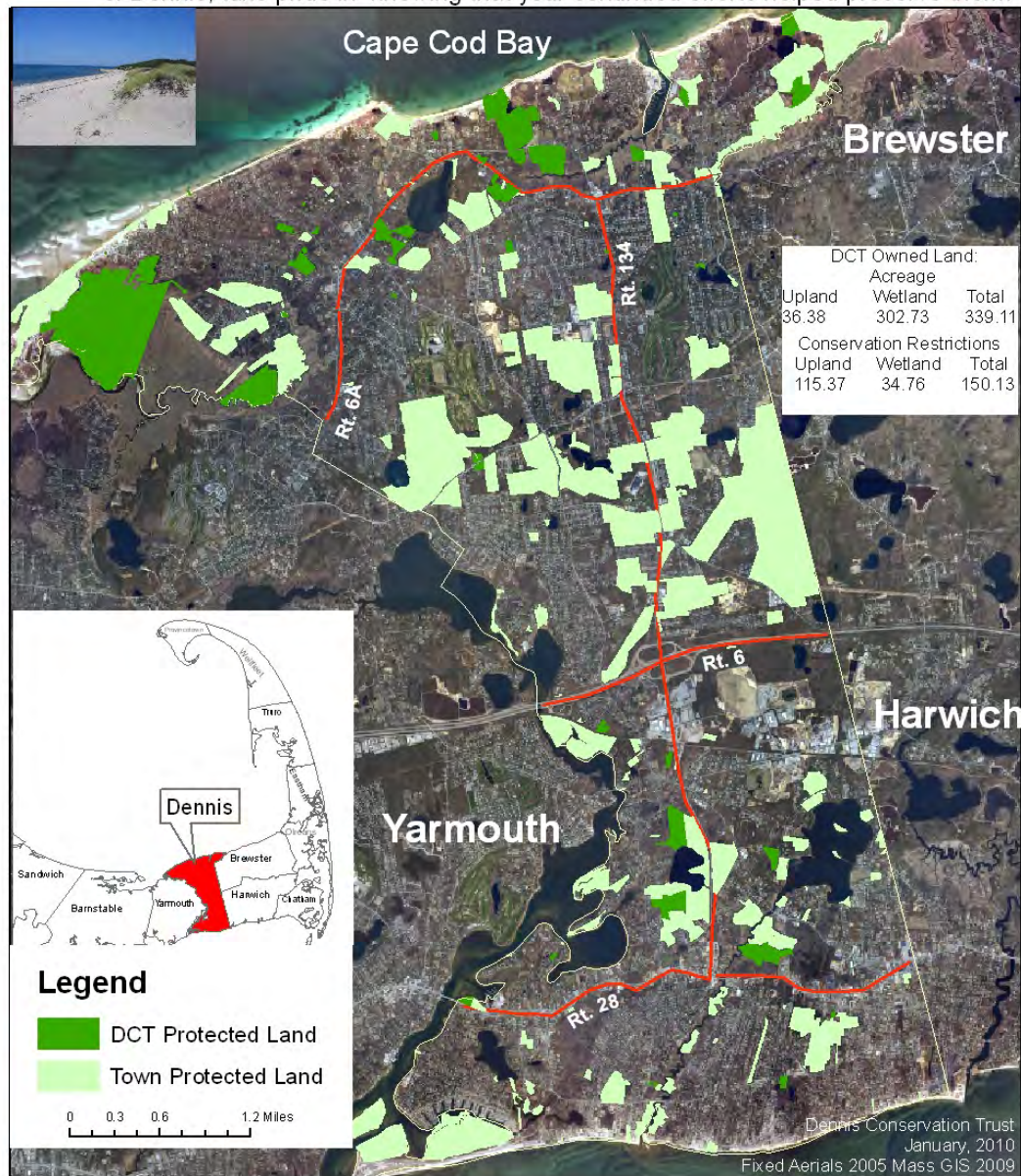
Dennis Conservation Trust (DCT)

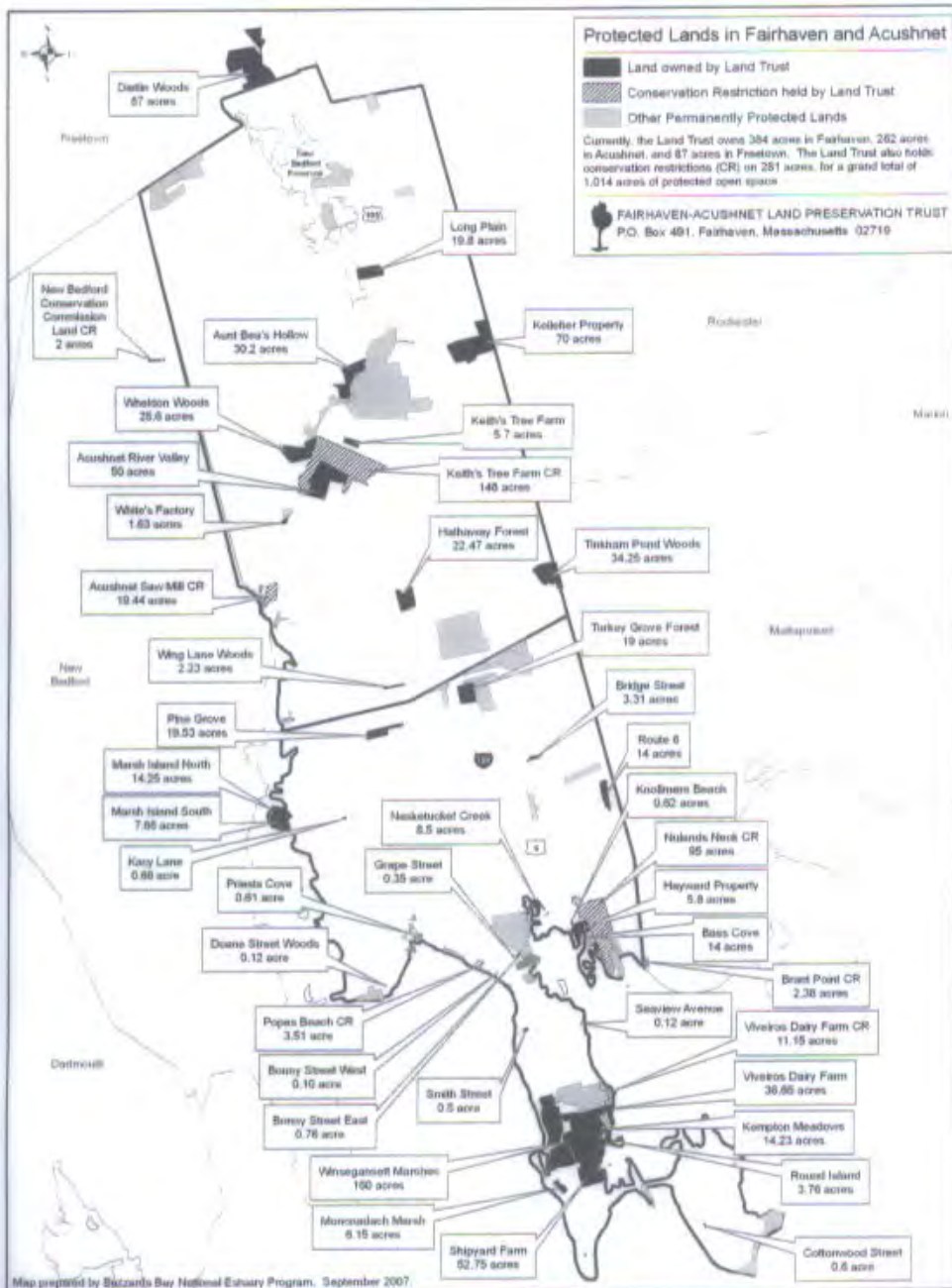
Aerial Map of Protected Lands

www.OrleansConservationTrust.org



Years from now, when you and your future generations walk the natural paths and places of Dennis, take pride in knowing that your continued efforts helped preserve them.





Shipyard Farm Conservation Restriction Photopoint Map





Directory to Public Access Lands Protected by the Wareham Land Trust

North Water Street Beach: Ouset
Gift of Sylvia Hammond McCabe & Family, 2004
1.3 acres of beachfront stretching from the stone bridge to Cove St.
Public Access from North Water Street

Great Neck Road Conservation Area: Wareham
Gift of Wareham Historical Society, 2004
0.2 acre: former site of Union Chapel & Schoolhouse No. 6
Public Access from Great Neck Road & Crooked River Road

Illam Bay Point: Ouset
Gift of Hammond, Lacasse & McCabe Families, 2004
3.11 acres of woodland with a certified vernal pool
Public Access from the end of Broad Street

Tweedy & Barnes: West Wareham
Gift of the Tweedy & Barnes Cranberry Co., 2005
25 acres of upland, natural bog & wetlands
Public Access near corner of Blackmore Pond Road & County Road

Whitlock's Landing: East Wareham
Purchased 2005
0.5 acre on the Agawam River
Fishing, canoeing & kayaking
Public Access at 150 Glen Charlie Road

Murphy Freedom Cranberry Land: Wareham
Protected by Town of Wareham in 2004
9.65 acres adjacent to Minor Forest, woodland, bogs & frontage on Crab Cove
Public Access from Indian Neck Road

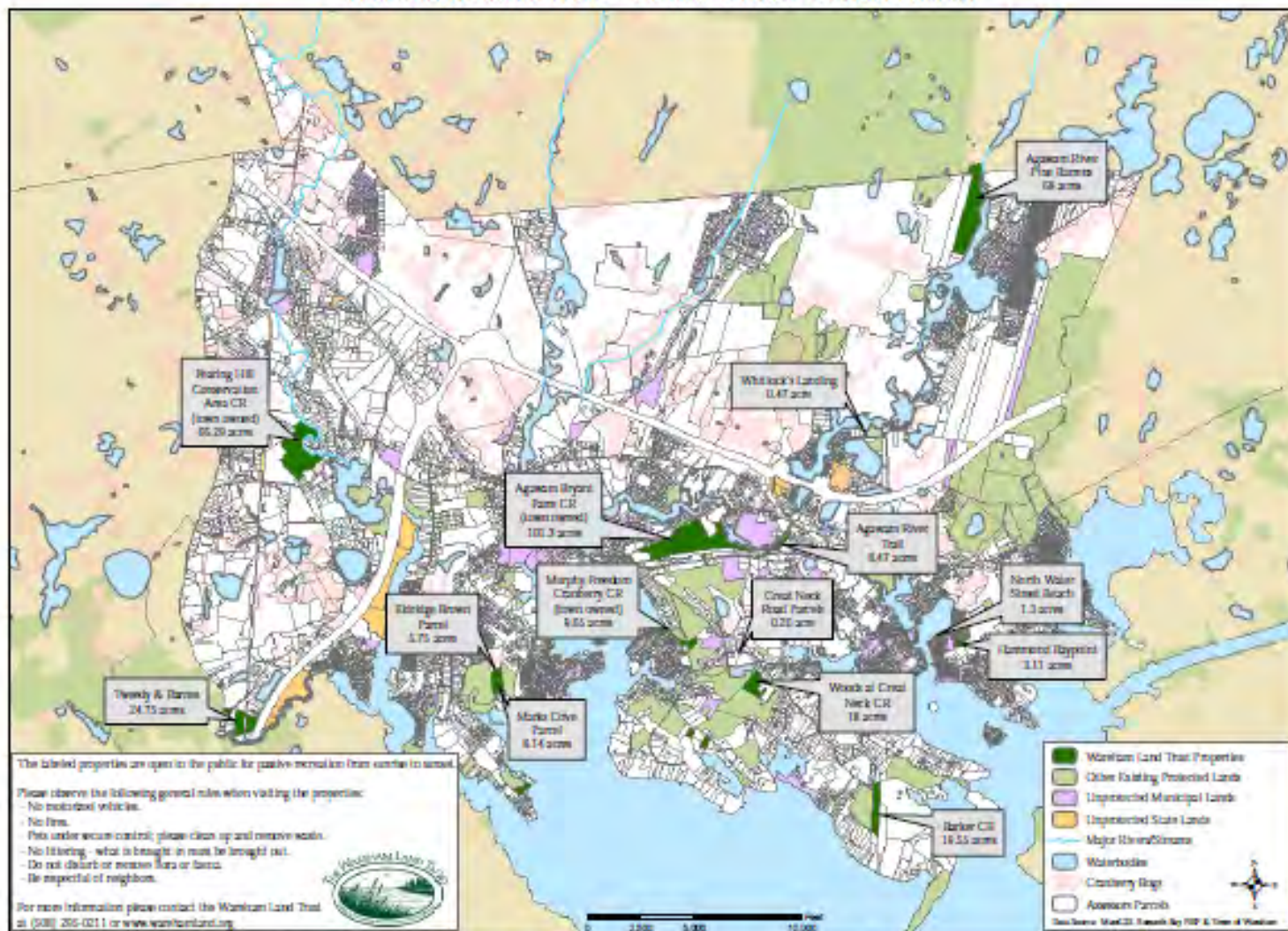
Mark's Cove Conservation Area: Wareham
5.75 acres Gift of the Eldridge Brown Families, 2005
8.14 acres purchased in 2007
14 acres of upland forest & wetland with views of coastal waters and cranberry bogs
Public Access from Shady Lane

Fearing Hill Conservation Area: West Wareham
Purchased by Town of Wareham in 2002
66.29 acres of woodland, streams, flora & fauna bordering
Public Access from Fearing Hill Rd near Wyndmoor Run

Agawam River Pine Barrens: East Wareham
Purchased by Town of Wareham in 2007
68 acres of pine barrens along the Agawam River
Off Glen Charlie Road

Agawam Bryant Farm: Wareham
Purchased by Town of Wareham in 2004

Wareham Land Trust - Lands Under Conservation



Trail Creation & Land Management











Resources

- Buzzards Bay National Estuary Program (for Buzzards Bay Watershed Land Trusts)

Mapping Assistance: Sarah Williams 508-291-3625 x13,
sarah.williams@state.ma.us

- Cape Cod Commission (for Barnstable County Land Trusts)

Anne Reynolds, GIS Assistance, 508-362-3828,
areynolds@capecodcommission.org

Heather McElroy, Cape Cod Pathways, 508-362-3828,
hmcelroy@capecodcommission.org

Barnstable County AmeriCorps Cape Cod Program,
<http://www.rdoac.org/americorps/>, 508-375-6869

Contact Info of Presenters

- John Gould, The 300 Committee – 508-540-5779, jhgould@comcast.net
- Ryan Mann, Harwich Conservation Trust – 508-432-3997, hctryan@cape.com
- Kris Ramsay, Orleans Conservation Trust – 508-362-3422, compactk@cape.com
- Craig Schneeberger, Chatham Conservation Foundation – 774-212-2528, skierhiker@hotmail.com
- Sarah Storer-Rickson, Dartmouth Natural Resources Trust – 508-991-2289, sarah@dnrt.com
- Heidi Blythe, Coalition for Buzzards Bay & Wareham Land Trust – 508-999-6363 x213; 508-295-0211
blythe@savebuzzardsbay.org